

High Voltage Power Line



PRODUCTS:

- PROXIMITY ALARMS
- RANGE CONTROL WARNING DEVICES
- DEVICES THAT LIMIT RANGE
- INSULATED LINKS

Construction:

Heavy equipment such as cranes, power shovels, concrete pumps, and dump trucks.

Utility Companies:

Aerial towers and platforms.

Fire Departments:

Snorkel units, aerial towers, platforms and aerial ladders.

Railroads:

Locomotive cranes and railroad wreckers.

Signs (Billboards):

Telescoping arms and booms.
Television Broadcast vehicles - with telescoping mast.

Other:

Farm equipment, portable drilling rigs, house movers, and truck-mounted "A" frames.



WE ARE IN THE BUSINESS OF SAVING LIVES

Just about anything that can reach power lines! www.smc-comms.com

High Voltage Power Line Proximity Warning System



This solid state electronic safety system provides both audible and visual warning signals to alert the operator and attendant ground personnel when the boom comes within proximity of an energized high-voltage power line.

FEATURES:

System goes to maximum sensitivity when first activated.

The system can be activated automatically at engine start-up, or by use of the power switch on the control panel. Entire length of the boom — from tip to base — is protected. Any part of the boom that enters the warning zone will set off the alarm.

Complete system test function tests and confirms the alarm sensing circuitry, antenna, alarm horn, and alarm light. The operator can test the entire system at anytime.

No false alarms due to external interference.

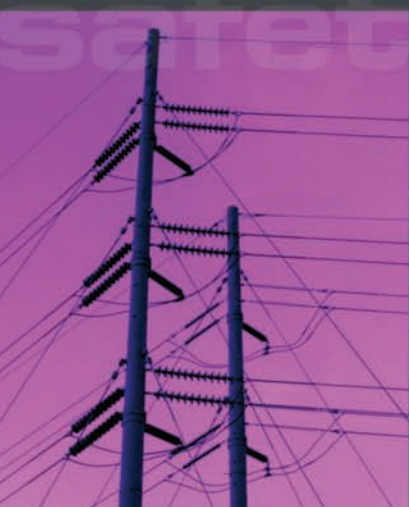
Provides warning of lightning so that operations can be discontinued until the electrical storm has passed. Simple adjustment of warning

zone. The operator doesn't need to know voltage in the power line. The system can be used to confirm power line shut off.

Easy Installation.



Why Risk It!



High Voltage Power Line



Wireless Proximity Detector



FEATURES:

- Wireless E-field detection in 50 Hz and 60 Hz over a wide range of sensitivity.
- Between one and four wireless sensors integrated into the network.
- Optional capabilities to log events to PC/laptop via data port or via wireless link.
- Logs date, time, and warnings given to operator.
- LCD screen on base unit.
- Relay output for each alarm.
- Audio warning tones.
- Optional speech synthesizer module.
- Adjustable limits for warnings. Default level on switch-on is maximum sensitivity.
- 12/24 Volt operation for base unit.
- Continuously 'on' system for remote users.
- Environmentally resistant to moisture, shock and heat.
- Self-checking for network and communications status.
- Flash upgradeable firmware in base unit.
- Small size single module.

The high voltage proximity detector is designed to alert mast and boom vehicle operators to the danger of contact with a live power line, the result of which could easily cause injury, death or damage to equipment.

