

Livetrack is a fully-featured and versatile stand-alone solution, totally browser based, with no need for any installation or bespoke software.

It provides all the means required to track and control DMR-based mobile, portable and fixed terminals.

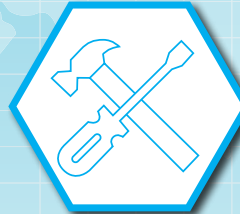
This is one of many interconnected applications common to the SMC gateway, which work together to provide flexible custom solutions.

### Features

- Real Time GPS tracking
- Custom mapping
- Off-line mapping
- Platform agnostic (web application)
- Call logging
- Short-term history, up to 10,000 logged events
- Reporting of stored events
- Geofencing



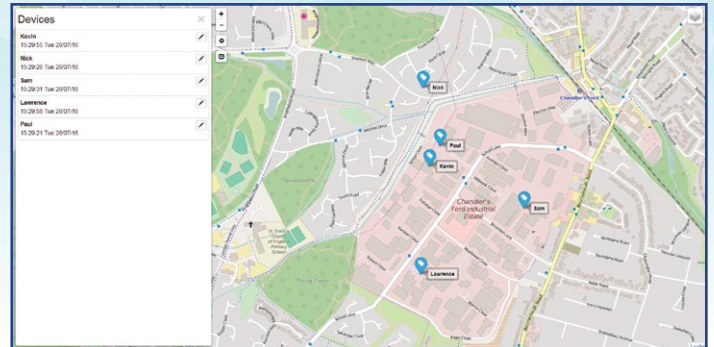
**Location Tracking**



**Configuration**



**Radio Management**



### Uses include

- Safety of Personnel and Assets from real-time location and status assessment
- Route and time management
- Maintenance monitoring
- Alarm reporting
- Email communication
- Text messages

### Other solutions in the Gateway Suite



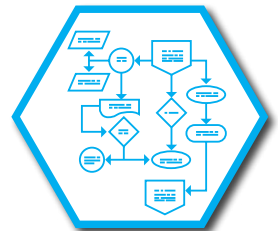
**Teleconnect**



**Lone Worker**



**Alarm Handler**



**Advanced Application Builder**